

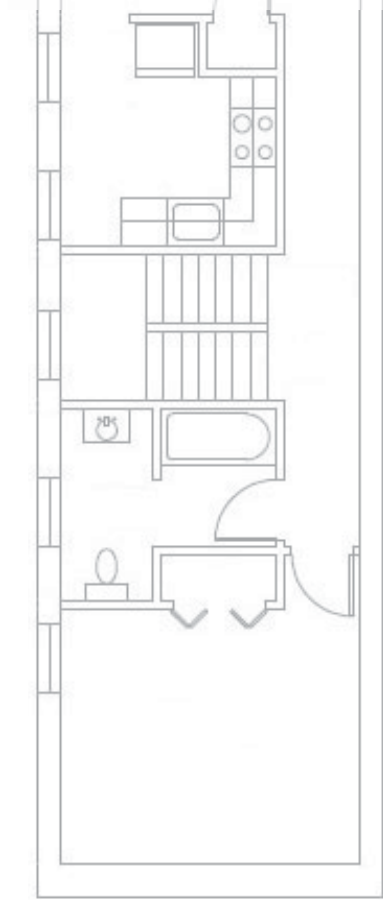
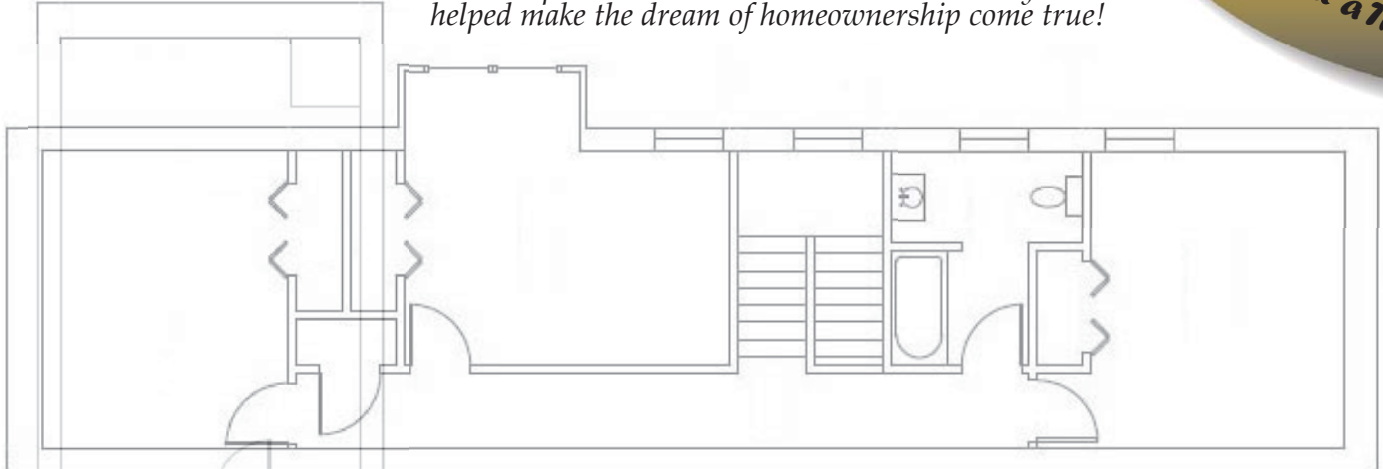


*Purchase a specific item to help complete the Habitat homes!*

*A great alternative gift for birthdays, holidays, graduations, weddings, Mother's Day, Father's Day and more!*

*Please send the name and full address of the honored person and we will let them know they have helped make the dream of homeownership come true!*

*Build a House one Piece at a Time!*



***\$25 and Under***

- Light Switch: \$1
- Peep Hole: \$5
- Spackle: \$5
- House Number: \$3
- Mail box: \$15
- Front door knocker: \$18
- Smoke detector: \$18
- Front entry light: \$25
- Back entry light: \$25

***Under \$50***

- Bi-fold door: \$35
- Living room light: \$35
- Kitchen light: \$35
- Bathroom accessories: \$35
- Bedroom light: \$35
- Laundry room light: \$36
- Kitchen range hood: \$36
- Dining room light: \$36
- 2nd floor hallway light: \$36
- Stair Light: \$40

***Under \$1,000***

- Bathroom mirror & light: \$75
- Bathroom faucets: \$100
- Bathroom commode: \$125
- Bedroom door: \$198
- Bathroom vanity & sink: \$300
- Basement stairs: \$350
- Hot water heater: \$400
- Bath/shower unit: \$414
- 2nd floor stairs: \$450
- Front door & trim: \$450
- Furnace: \$700

***Over \$1,000***

- Front steps & porch materials: \$1,296
- Rear steps & deck materials: \$1,300
- 12 Windows installed: \$3,540
- 10 Kitchen cabinets: \$3,000
- 100 Dry wall panels: \$1,500
- Flooring for 6 rooms: \$4,400

***Building a home for a family in need- priceless!***

Checks should be made payable to Habitat for Humanity of the Chesapeake  
 3741 Commerce Drive, Suite 309, Baltimore, MD 21227  
 Online donations can be made at [www.habitatchesapeake.org](http://www.habitatchesapeake.org).